

## **Installation Instructions**

### **Software Requirements**

Prior to installing the Demo Version of Module 2 of Maintenance Advisor Software - “**MAS Cycling PP**”-, you will need the following:

- < Windows 2000 or Window XP platform
- < The NET Framework version 1.1, which is a component of the Microsoft Windows® operating system used to build and run Windows-based applications.
- < Adobe Reader version7

### ***Check to See If You Have the .NET Framework Installed***

You can check to see if you already have the .NET Framework 1.1 installed by clicking **Start** on your Windows desktop, selecting **Control Panel**, and then double-clicking the **Add or Remove Programs** icon. When that window appears, scroll through the list of applications. If you see Microsoft .NET Framework 1.1 listed, the latest version is already installed and you do not need to install it again.

When running the application Setup for the installation, you will be alerted if you need to install the .NET Framework 1.1 Redistributable to run the application – if you do, you need to get the [Microsoft .NET Framework 1.1 Redistributable](http://www.microsoft.com/downloads/details.aspx?FamilyID=262d25e3-f589-4842-8157-034d1e7cf3a3&DisplayLang=en) from the Microsoft Download Center by clicking on the following link (click on the second line of the link):

<http://www.microsoft.com/downloads/details.aspx?FamilyID=262d25e3-f589-4842-8157-034d1e7cf3a3&DisplayLang=en>

It is also **highly recommended** to run a [Microsoft Windows Update](#), which will check to see if you need any updates for Windows, your hardware or your devices.

### **Download**

Launch **Internet Explorer**, go to the **Power Plant Maintenance Advisor Software** webpage <http://www.ommi.co.uk/etd/MAS.htm> and download the installation set-up of the demo version by clicking on the link **DOWNLOAD MAS Cycling PP**. This action will automatically ask you for a **password** that should have been sent to you by ETD. If not, please contact ETD (see below contact details).

Download/save the file **Setup.zip** on the **Desktop** of your computer.

**Exit** Internet Explorer.

### **Installation**

**Unzip** the **Setup.zip** file on your Desktop, this action will create a folder called **Setup**, which contains several files, one of which is called **Setup.Exe**.

Click on **Setup.Exe** to install the MAS on your computer. This action will bring up the InstallShield Wizard, which will guide you through the steps required to install the **MAS Cycling PP** on your computer as described below:

#### **Step 1:** Splash Screen Window

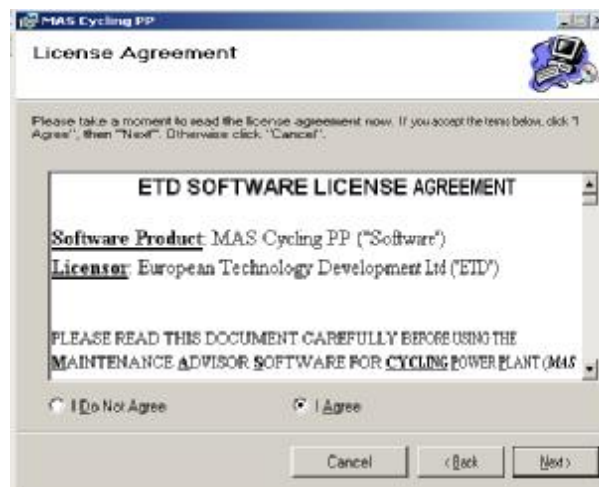
Provides the name and the version of the software. Click next to proceed



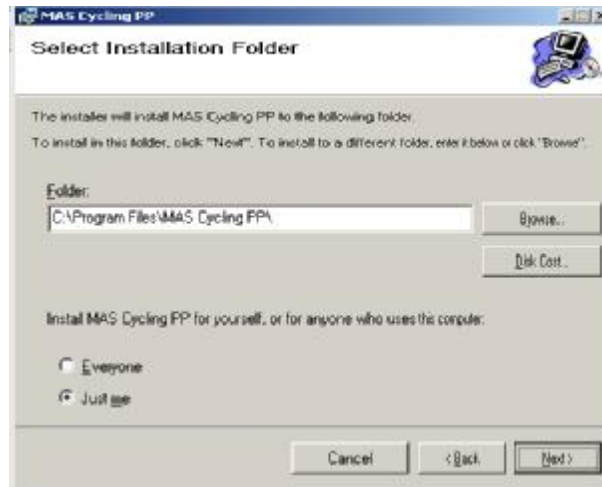
**Step 2:** Welcome Window  
Click next to proceed



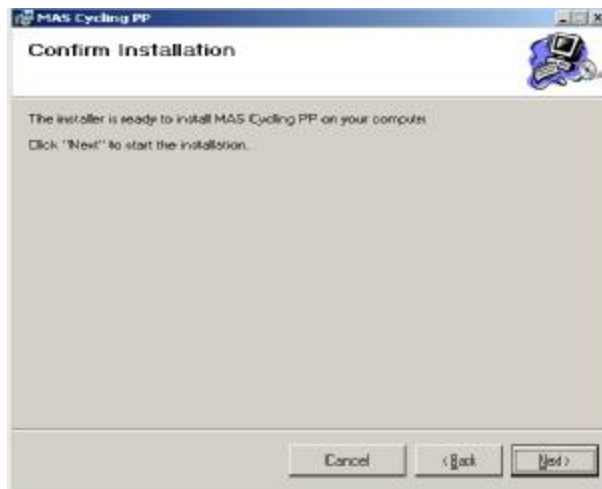
**Step 3:** Licence Agreement  
Please read the licence agreement and if you accept the terms, click “I agree” and then Next to proceed.



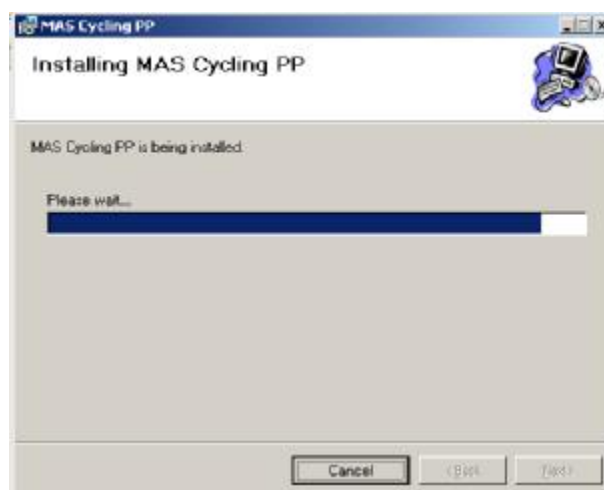
**Step 4:** Select the installation folder  
The MAS should be installed in the folder C:\Program Files\MAS Cycling PP\.



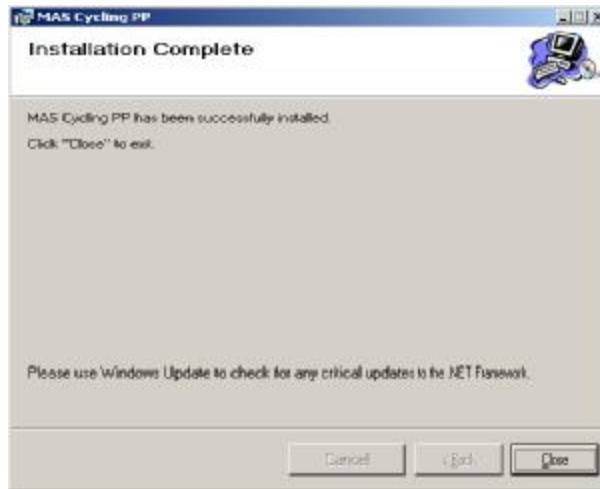
**Step 5:** Confirm installation  
Click Next to proceed



**Step 6:** Installation  
When the installation is complete, the Wizard will take you to the next window that confirms the installation is complete.



**Step 7:** Confirmation  
This step tells you if the installation was successful - if so please close the wizard.



### Run the MAS Cycling PP application

The **MAS Cycling PP** application can be run *either* by clicking **Start** on your Windows desktop, selecting **Programs**, and then double-clicking on the **MAS Cycling PP**, or by double-clicking on the icon (see below) created on the desktop:



For further details on how to run the **MAS Cycling PP**, please refer to the document called "**Help.pdf**" provided within download (folder Setup)

If you encounter any problems during the installation and/or when running the software, please contact:

***Dr N Le Mat Hamata (Mrs)***

European Technology Development Ltd.

2 Warwick Gardens, Ashted, Surrey KT21 2HR, UK.

Tel: +44(0)1372 811675 (Direct )

+44(0)1372 802555 (general)

Fax: +44(0)1372 229164

E-mail: [nhamata@etd1.co.uk](mailto:nhamata@etd1.co.uk) or [enquiries@etd1.co.uk](mailto:enquiries@etd1.co.uk)